



OpreX™ Asset Management and Integrity

## Versatile Device Management Wizard FieldMate



# Intuitive operability for innovative field work

## Next generation of portable field device management software

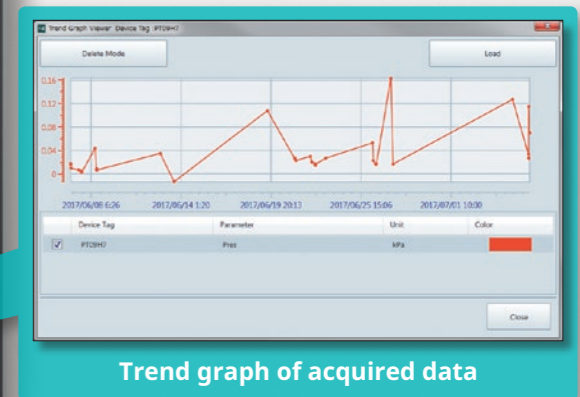
FieldMate assists easy configuration, adjustment, and functionality test in the field

### Quick & Easy access to frequently used functions saves time required for device configuration

**Device Status**  
Color coded status of connected device

**Device Info.**  
Tag, Vendor, etc.

**Typical Parameters**  
Frequently used parameters can be configured to be displayed in main screen



Support Input Loop Check

Generate Work Report

One Click

Display all device parameters and compare with saved device data snapshots

Perform Zero Point Adjustment

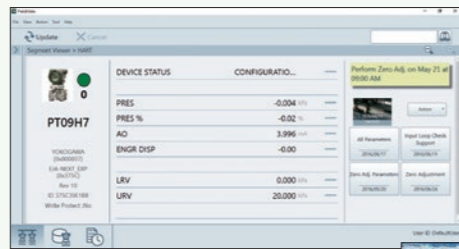


# Intuitive operability for innovative field work

## One Tool for All (Multi protocol & Multi vendor Support)

### Device Configuration & Adjustment Support

#### Configuration & Parameter check

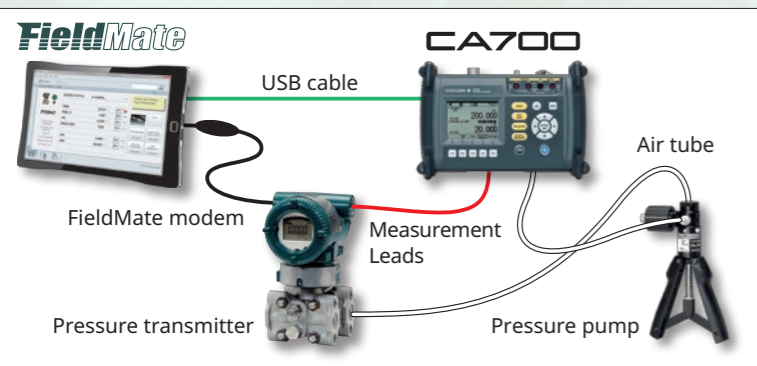


Device configuration and adjustment support is more convenient using bigger screen than usual handheld terminal. Maintenance guideline, product manual, multi-media file, etc. are available on demand when needed. This ensures high quality and efficient maintenance work.

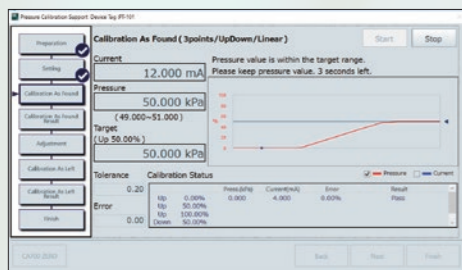
#### Installation of Field Devices

#### Calibration & Adjustment

### Device Calibration & Adjustment Support



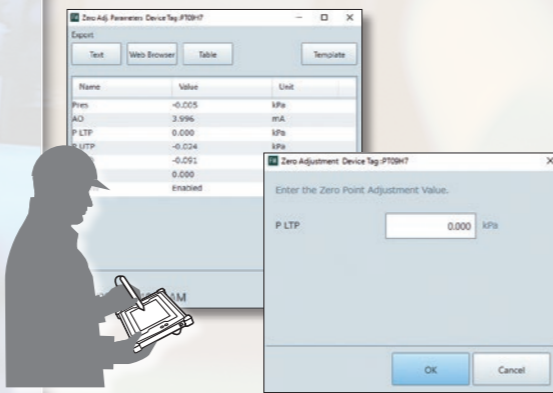
Supports the calibration work in combination with Pressure Calibrator CA700.



Device calibration work can be performed from the graphical interface by monitoring the input pressure and the current signal.

#### Zero Adjustment after installation

### Zero Adjustment Support



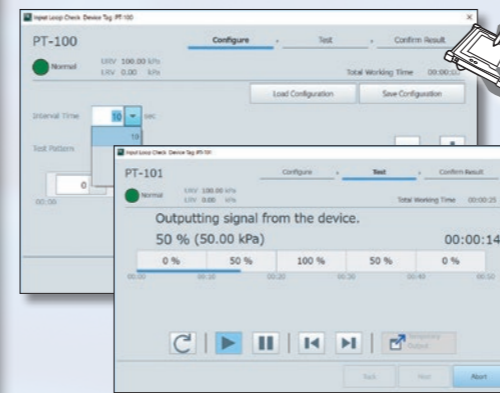
After installing Yokogawa Pressure/DP transmitters, Zero Point Adjustment can be executed immediately on FieldMate main screen. This saves the time and prevents the wrong operation. Increase plant uptime and confirm accurate measurement.

### FieldMate targets for any device.



#### Loop Check

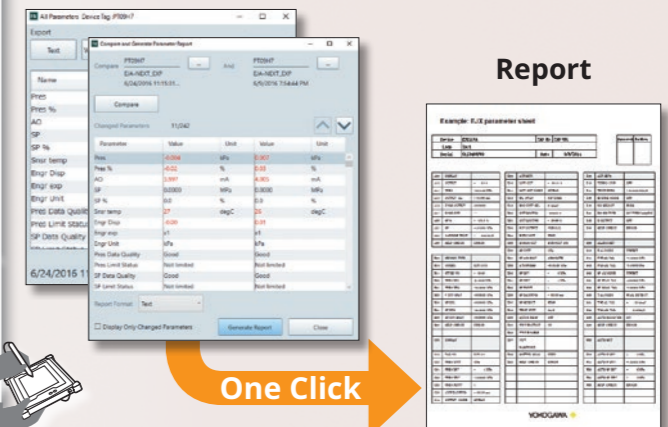
### Input Loop Check Support



User can configure the loop check pattern (signal output, timing) and execute loop check continuously without stopping. User can manipulate loop check pattern execution, and manually send signal output during loop check execution. This will aid in quick commissioning and plant start-up.

#### Report Generation

### Report Generation Support



FieldMate can generate reports of configured device, saved data snapshots, comparison of live data and snapshots, and also loop check execution results. This enables proper documentation and record keeping in the plant, and eliminate manual work in creating documentation.



# Device Maintenance Support

## Powerful platform for innovative field work

# Make Best Use of Field Data

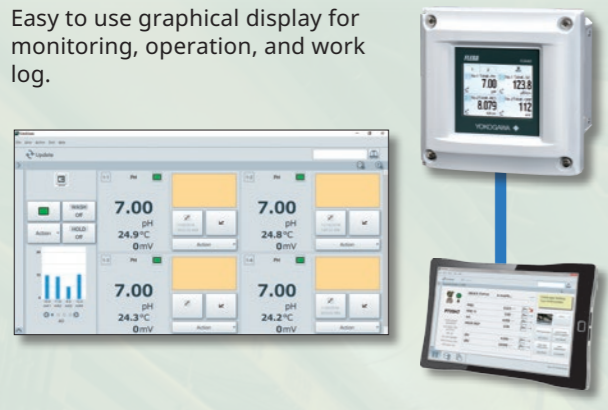
## Assist and Analysis of Field instrument

### Calibration Management for Liquid Analyzers

FieldMate provides dedicated functionality for 4-Wire Converter "FLXA402" and SENCOM™ Smart Adapter "SA11".

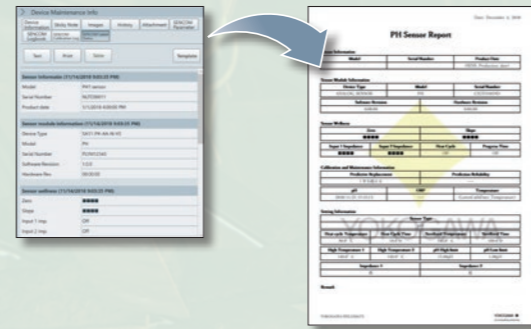
#### Local Display

Easy to use graphical display for monitoring, operation, and work log.



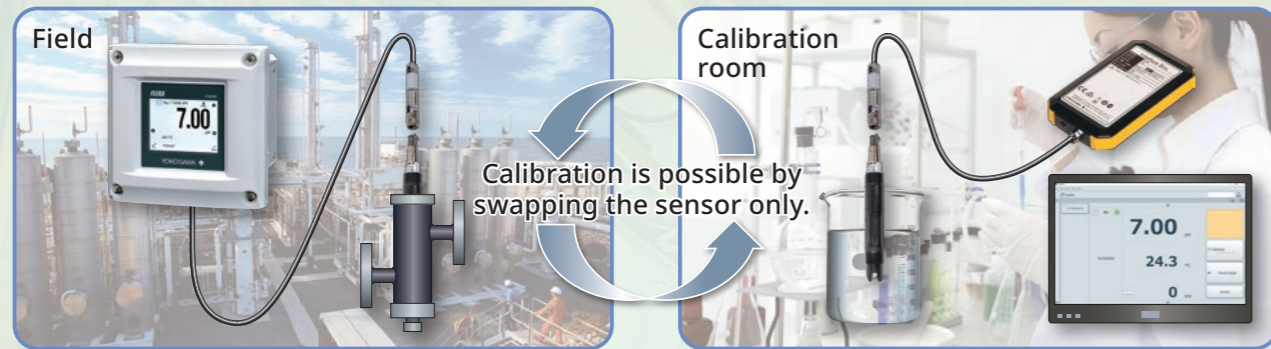
#### Device information output

Sensor and calibration information can be exported to any format you desire.



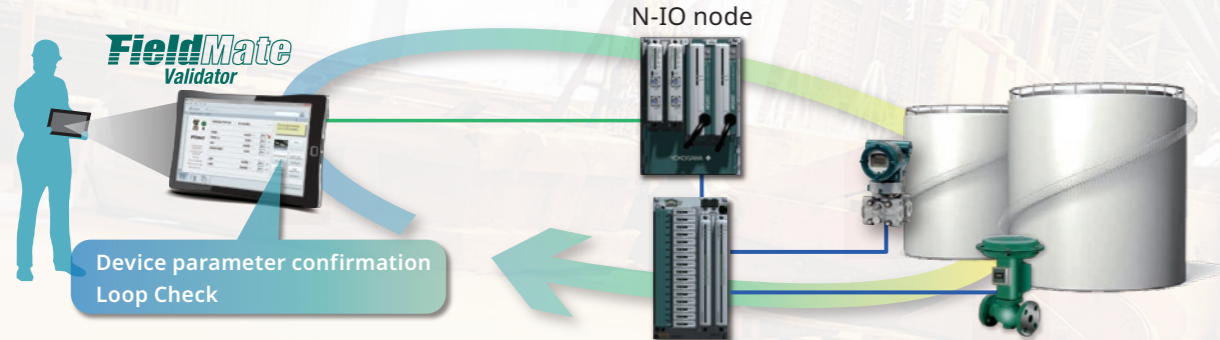
#### Direct Access to SA11

- FieldMate can connect to SA11 directly.
- SA11 can be adjusted in the calibration room.



### CENTUM N-IO, Loop Inspection Software (FieldMate Validator)

Enable plant startup works (connection check, device configuration adjustment and Input/Output check) for devices connected to CENTUM N-IO node without the need for FCS.

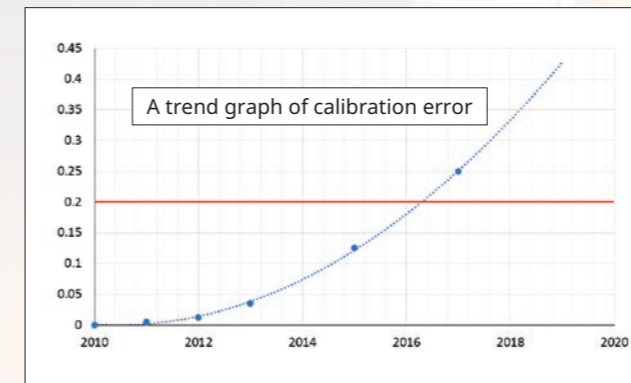


### Asset management with Field data

The collected data in daily work will be used for diagnosis and analysis

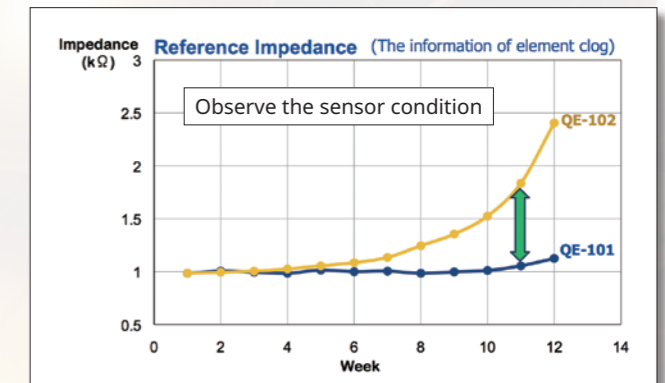
#### Calibration data sample of transmitter

Deterioration will be analyzed with data trend.



#### Cleaning indication sample of analyzer

Comparing the analyzers' self-diagnosis, environmental effect will be studied.

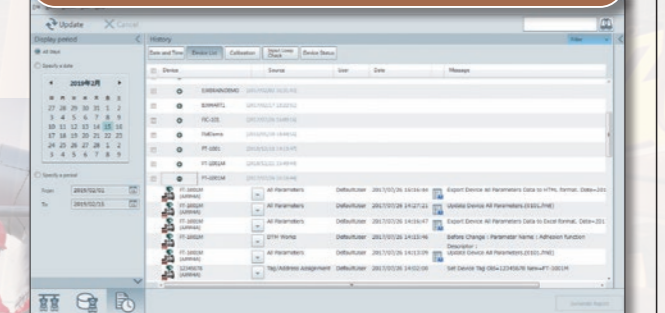


#### Asset management room



- FieldMate supports not only setting, adjustment and calibration but also loop-check and application test. Operation results and work log are saved to database automatically.
- Plant Asset Management is realized with the above collected data. This historical data can be utilized in various ways on Plant Asset Management.

#### Automatic storage of device data and work log



#### Field





## Software Operation Environment

|    |  |
|----|--|
| OS | Windows® 10 32 bit/64 bit*1  |
|    | Windows® 7 Professional 32 bit/64 bit SP1 or later, Windows® 7 Home Premium 32 bit/64 bit SP1 or later |

\*1) Refer to the General Specification (GS 01R01A01-01E) about supported OS version.

## Hardware Operation Environment

|                 |           | Windows® 10  | Windows® 7  |
|-----------------|-----------|--|---|
| CPU             |           | 1 gigahertz (GHz) or faster processor  |   |
| Main Memory     |           | 2 GB or more   |   |
| Hard disk space |           | 4 GB or more   |   |
| DVD-ROM Drive   |           | Windows® 10 compatible   | Windows® 7 compatible   |
| Display         |           | 1,024×768 or better resolution recommended<br>Windows® 10 compatible   | 1,024×768 or better resolution recommended<br>Windows® 7 compatible |
| Network port    | USB port  | USB FieldMate Modem: BRAIN/HART (Yokogawa option)<br>NI USB-8486: FOUNDATION™ fieldbus H1 (National Instruments)<br>PROFIsusb: PROFIBUS (Softing)<br>ACT-IR224UN-LN96-LE (9600 bps): ISA100.11.a (ACTISYS)<br>Isolated RS422/485 USB adaptor SP390A-R2: Modbus (BLACK BOX) |   |
|                 | Bluetooth | VIATOR® Bluetooth® Interface: Model 010041: HART (MACTek®)   |   |

## Related Product



Pressure Calibrator  
**CA700**

Synaptic  
Business  
Automation

Synaptic Business Automation creates sustainable value by connecting everything in our customers' organization. To realize this, Yokogawa integrates its business and domain knowledge with digital automation technologies, and co-innovates with customers to drive their business process transformation.

### Trademarks

All brand or product names of Yokogawa Electric Corporation in this bulletin are trademarks or registered trademarks of Yokogawa Electric Corporation.  
All other company brand or product names in this bulletin are trademarks or registered trademarks of their respective holders.

### NOTICE

- Before operating the product, read the instruction manual thoroughly for proper and safe operation.
- If this product is for use with a system requiring safeguards that directly involve personnel safety, please contact the Yokogawa sales offices.

**YOKOGAWA ELECTRIC CORPORATION**  
World Headquarters

9-32, Nakacho 2-chome, Musashino-shi, Tokyo 180-8750, JAPAN

<http://www.yokogawa.com/>

**YOKOGAWA CORPORATION OF AMERICA**  
**YOKOGAWA EUROPE B.V.**  
**YOKOGAWA ENGINEERING ASIA PTE. LTD.**  
**YOKOGAWA CHINA CO., LTD.**  
**YOKOGAWA MIDDLE EAST & AFRICA B.S.C.(c)**

<http://www.yokogawa.com/us/>  
<http://www.yokogawa.com/eu/>  
<http://www.yokogawa.com/sg/>  
<http://www.yokogawa.com/cn/>  
<http://www.yokogawa.com/bh/>

Represented by:

Subject to change without notice.

All Rights Reserved, Copyright © 2005, Yokogawa Electric Corporation.

[Ed:10/b]

Printed in Japan, 904(KP)